



We are spotlighting Aptar Beauty's Go2Lab in Trumbull, Connecticut, which develops streamlined packaging solutions for the evolving beauty industry. To keep up with fast-moving consumer trends, Aptar uses the Go2Lab's Fast Plastics Capabilities to reduce lead times significantly. This allows us to bring custom ideas to life quickly through 3D printing and real plastic parts, ensuring a rapid turnaround for our customers. The Go2Lab's continuous innovation helps Aptar maintain its leadership in modern packaging.

Explore our website to read about how Aptar shapes #Innovation in beauty and other industries:

<https://aptar.com/innovation-insights/>

**#TransformingIdeas**



CAD DRAWINGS



PHOTOREALISTIC  
RENDERINGS



3-D MOLDING  
& PRINTING



METAL & PLASTIC  
COLOR EXPLORATION



Megatrends, Market  
& Consumer Insights

Concept Generation,  
Customer & Consumer  
Validation



Technology Development,  
Innovative Solutions

## WHO WE ARE

Aptar Beauty is a leading and innovative provider of dispensing solutions for beauty brands worldwide. We specialize in value-added sprays and dispensing solutions for fragrance, cosmetics, skincare, and personal care. Our partnerships with customers help reinforce their brand equity and deliver exceptional user experiences.

## OUR PACKAGING AND DISPENSING SOLUTIONS

We offer a wide range of dispensing and full packaging solutions designed to handle various formulas and viscosities. From protective airless solutions and captivating fine mist and fragrance sprays to precision lotion pumps and advanced aerosols, our products enhance consumer use through expertise, precision, sensory appeal, and controlled dosing.

As a trusted partner to consumer brands, Aptar Beauty provides additional technical expertise, custom solutions, and a broad range of decoration capabilities. Partner with us today to create experiences that resonate with your customers and stand out in the market.



INNOVATION

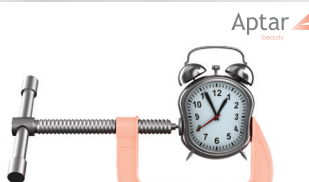


IMAGINE IT. CREATE IT.  
LAUNCH IT.

Go2Lab is shrinking the timeline.

Go2Lab Development: Less Than 6 Weeks

Traditional Development: Up to 16 Weeks



Learn More at [Aptar.com](https://aptar.com)

Aptar  
265 Exchange Dr.  
Crystal Lake, IL 60014  
815-477-0424

[aptar.com/beauty/personal-care/](https://aptar.com/beauty/personal-care/)

## ALL PLASTICS



### GSA Advance

- Well-recognized product performances with proven Aptar technology
- Plastic spring outside dosage chamber (higher compatibility)
- Modular pump's design / easy to customize



### HDP 3.5

- All Plastic full recyclable pump – in the polyolefin recycling stream
- Easy to fit to the shelf – shortest pump stack height on the market
- E-Commerce capable – for large pack size without add-on clip



### APF (All Plastic Foam Pump)

- Recyclable All polyolefin foam pump
- Delightful consumer experience - soft actuation, convenient design
- Consistent high-quality foam
- Omni-channel ISTA6 compliant



### EZ Advance

- All plastic spray mist pump designed for recyclability
- Twist-to-lock feature with non-detachable tamper evident
- High-quality and consistent spray



### Alpha Advance

- Highly recyclable pump solution recommended for PP, PE and PET bottles
- Dosage: 70,150 (step 1), 240µl for both versions
- Neck size: 18/400 (step 1); 20/410 (step 2)

Notes: \_\_\_\_\_

\_\_\_\_\_

\_\_\_\_\_

\_\_\_\_\_

\_\_\_\_\_

## AIRLESS/DROPPERS/ SENSORIAL DISPENSING



### Airless Glass

- All airless benefits (protection, fast priming, evacuation rate, 360° use) combined with a recyclable glass bottle
- Snap-on pump: plastic or metal (Evolux/Evoclassic)
- 15, 30, and 50ml available with 150 and 240 mcl dosage



### Gaia

- Reloadable premium airless solution, easy and comfortable reload through push & pull
- Available in 15 and 30 ml, metal free path pump 70 and 150 µl
- Recyclable refill in the PP recycling stream



### Neo Airless: Freedom of shape

- To Press: Bottle and pouch in full Polyolefin
- To Pump: Inclusive design, large actuator + squared bottle for stability



### Neo Dropper

- Classic: intuitive control of the dosage by squeezing the bulb
- Autoload: precise automatic dose while opening the cap

### PowerMist

- Non-pressurized system, safe, refillable. Only pure formula inside.
- Wider gesture with a single actuation, covering larger areas, continuous aerosol-like spray
- Drier mist feeling than traditional sprays pumps or triggers, thanks to the homogenous fine particles size



Notes: \_\_\_\_\_

\_\_\_\_\_

\_\_\_\_\_

\_\_\_\_\_

\_\_\_\_\_

## AEROSOLS



### Maya

- Twist-to-lock actuator designed for Clean Beauty
- 100% customizable cap
- Sustainable packaging for a hoodless design



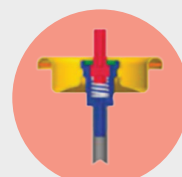
### Apollo

- Integrated twist-to-lock technology with two distinct delivery options
- Differentiates product brand by offering a premium feature
- Shorter fan spray available



### Gladiator

- Distinct twist-to-lock for aerosol and BOV application
- Offers inclusive, ergonomic design for both thumb and finger actuation
- Available in multiple colors with matte cover and gloss base



### AAT Valve

- Commercially available valve technology for high powder application (>9% powder content)
- Offers ultra smooth flow path that reduces clogging
- Ideal valve product for dry shampoos, body deodorant, and foot spray applications



### Quartz

- New light-weight insertless actuator
- Mono material product designed for easy recyclability

Notes: \_\_\_\_\_

\_\_\_\_\_

\_\_\_\_\_

\_\_\_\_\_

\_\_\_\_\_